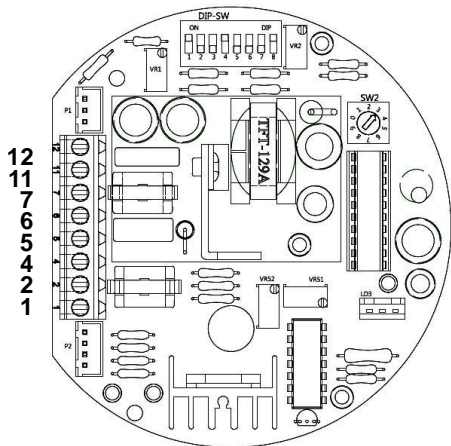


Adjustment – Modulating Control Board

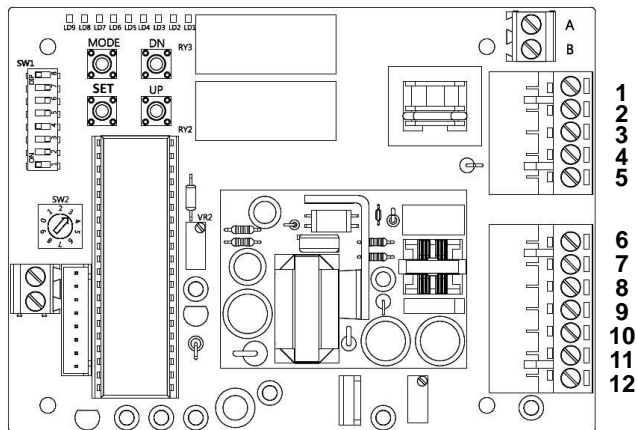
⚠ To avoid functional failure caused by statics, do not touch any components on the PCB with metal tools or bare hands.

1. **Surface** The surface is based on the actuator in 110 / 220V voltage.

OM-1、OM-A、OM-A-M



OM-2~OM-13、OM-F、OM-G

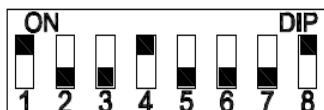


▼To adjust the following settings, turn power

2. Dip-Switch Setting (SW1)

Factory setting: 1,4,8 ON

* S1, S2 : Input Signal Select.



Input Signal	S1	S2
2~10V	OFF	ON
4~20mA	ON	OFF
1~5V	OFF	OFF

* S3, S4, S5 : Output Signal Select.

Output Signal	S3	S4	S5
2-10V	ON	OFF	ON
4-20mA	OFF	ON	OFF

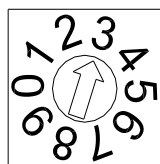
* S6 : Direction of travel in response to the control

S6	Symbol
OFF	
ON	

* S7 & S8 : Actuator response to the loss of control signal. (S6-OFF)

When signal fails	S7	S8
Fully closed	OFF	ON
Fully open	ON	OFF
Stops	ON	ON

3. Sensitivity Switch Setting(SW2) (Factory: 3)



- When switch to "1": The highest sensitive and the 0~90 degree can be divided up to around 50 times movement.
- When switch to "0": The lowest sensitive and the 0~90 degree can be divided up to around 10 times movement.
- The sensitivity decreases 5 times movement by sectors from SW1 to SW2, SW2 to SW3, SW3 to SW4 and so on.

LD1 : Fully - closed	LD6 : Motor thermostat turn off
LD2 : Fully - open	LD7 : Output signal short circuit
LD3 : Power	LD8 : Motor current is excessive
LD4 : Abnormal voltage	LD9 : Manual mode
LD5 : Wrong Input signal	

4. Setting for Open and Close (OM-1、OM-A、OM-A-M)

Adjust output signal/input signal

- VR1 — Adjust 10V,20mA (Input signal: fully-open)
 - VR51 — Adjust 10V,20mA (Output Signal : fully-open)
 - VR2 — Adjust 2V,4mA (Input Signal : fully-closed)
 - VR52 — Adjust 2V,4mA (Output Signal : fully-closed)
- The function of VR

Note: If it is necessary to adjust VR51 and VR52, VR1 and VR2 also need to be adjusted accordingly.

- Rotate VR1 counterclockwise until a light click is heard, then supply 10V (or 20mA) to modulating board. Slightly rotate VR1 clockwise until green LED keeps on. Adjust VR51 to complete.

VR51 : ⤴ Clockwise: decreasing signal.

⤵ Counter Clockwise: increasing signal.

- Rotate VR2 clockwise until a light click is heard, then supply 2V (or 4mA) to modulating board. Slightly rotate VR2 counterclockwise until red LED keeps on. Adjust VR52 to complete.

VR52 : ⤴ Clockwise: decreasing signal.

⤵ Counter Clockwise: increasing signal.

5. Setting for Open and Close (OM-2~OM-13、OM-F、OM-G)

Open setting

- Keep pressing "SET" for 2 seconds, then LD 9 comes on, it will enter to the manual mode.
- Keep pressing "UP" until actuator runs to fully-open position, LD2 comes on, then supplies the input signal (5V or 10V or 20mA).
- Press "MODE" once. The OPEN setting is completed.

Close setting

- Keep pressing "DOWN", until actuator runs to fully-closed position, LD1 comes on, then supplies input signal (1V or 2V or 4mA).

- Press "MODE" once. The CLOSE setting is completed.

After completing the above settings, press "SET" once

Adjust output signal

VR2 : ⤴ Clockwise: increasing signal.

⤵ Counter Clockwise: decreasing signal.